

COLLINGTREE NEWS

October 2015

*Visit the only website dedicated to
Collingtree village & parish*

www.justcollingtree.co.uk

Changing times in the Global Village

When, in the Sixties, Bob Dylan sang about *'the times, they are a-changin'* he cannot have foreseen how technology would revolutionise ideas about community and social interaction. Many older folk feel that the strong sense of community that they remember from childhood has disappeared.

Traditional village communities like Collingtree were built around personal contact through the church, the Pub and the school gate.

Now villagers are more likely to keep in touch through Email, Facebook and Skype but far from just replacing face to face socialising, the new social media can work to promote the activities and events that bring people together.

The sense of community has not been lost - it has just changed over the years.

As recently as 1851, Collingtree was a tiny hamlet based on farming and with a population of 234. The arrival of the Phipps family in 1860 and the building of the 'Big House' raised the profile of the village but most community life still revolved around the church and the pub. What is now the Village Room, was originally built by the Phipps family in 1896 as a 'Reading Room' to provide villagers with an alternative to the pub and access to newspapers and books.

The coming of the M1 motorway and later, the Northampton expansion programme, meant that Collingtree was brought closer to the urban sprawl from the north.

Collingtree had its own expansion when in 1963, the old Grange Estate was sold for development and new houses appeared on Spinney Drive, Lodge Avenue and Lake Walk.. The new villagers, many who worked in business, brought fresh energy and a flair for organisation.

Despite some early tensions and mutterings from locals about the village 'becoming like Beverley Hills' the new and the old joined forces in fighting off the absorption of Collingtree into Greater Northampton. But despite the new blood in the village, social activity was still based on events, meetings, celebrations and concerts.

Now we are in the internet age, Collingtree is changing again with many new families attracted by the village atmosphere that somehow has managed to survive. Once again there is a new energy to keep alive that sense of community.

Village websites, Twitter, Facebook and the rest of modern social media can play a big part, as long as we remember that not everyone is 'connected'.

What has not changed over the years is the need for active volunteers to take the lead, to organise the events, to bake the cakes, to raise funds, to do the medicine collection, to sit on the Parish Council, to maintain the church and run the clubs and associations.

In the end creating a sense of community depends on the people who make things happen.



ST COLUMBA'S + COLLINGTREE

Minister

Rev. Mike Burton 862284

Church warden

John Green 763468

PCC Secretary

Chris Wright 761930

Collingtree is part of the combined
Salcey Benefice together with
Roade, Courteenhall, Ashton & Hart-
well.

**Services for October****Sunday 4th October**

10.30am Harvest Festival

Sunday 11th October

9am Holy Communion

Sunday 18th October

10am Morning Prayer

Sunday 25th October

10.30am Family Service.

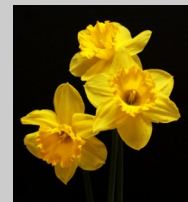
*Owing to the Rector's medical problems, the
dates and times of Services may have to change.*

Church Flowers Rota

Saturday 3rd October - Could as many 'Flower Ladies' as possible join us at 10am to arrange flowers for the Harvest Festival.

Saturdays 17th & 24th October Pam Gosling (Altar) Pauline Wright (Memorial)

Saturday 31st October Cheruth Brown (Altar) Ruth Marris (Memorial)

**Collingtree Church Fete**

The Fete held at the playing Field on 5th September, was a great success. The weather was kind and after covering all expenses a splendid £3,300 was raised for church funds.

A big thank you from the PCC to everyone who helped with the organisation and special thanks to the advertisers and sponsors ; **Westgate Nursing Home - Wollaston BMW - Stonhills Estate Agents - Robus LED Lighting - Stafford Sharp Associates - M&L Builders - Macflex - Lee Warren Electricians - Greenglades Decorating Services - Domus Asset Management - Hunter Maclean - Crazy4kids - 3Active - HRS Care Ltd - Sharpe Media - and a special thanks to Central Foods for supplying all the BBQ meats.**

Thanks also to Collingtree Cricket Club for the use of their Pavilion.

Grateful thanks to the many local companies who donated raffle prizes: Collingtree Coaches - Courteenhall Shooting - Riverside Hub - Ponies for Parties - The Wooden Walls - The Yeoman - Collingtree Golf Club - Monica Rose Beauty - Gecco - Neals Yard - GLK Holiday Club

Friends of St Columba's

The annual Social Evening of the Friends Group was held at the Village Room on 17th September. Chairman Peter Skinner and members of the fundraising committee thanked supporters for their contributions and outlined plans for further fundraising. All monies raised go towards the cost of maintaining the fabric of our ancient church.

Call 768394 if you would like to get involved.

What's On at the Village Room

Each Monday Morning - 10 - 11am Cha Char Chimps Activity Group for up to 4yr olds.

Each Monday Evening - 7 - 8pm Shakers Group Meditation Class

Each Tuesday Morning - 11.40am - Pilates Exercise Class (£6)

First Tuesday Evening each month - 7 - 8pm 'Paeon Frequencies' Relaxation & Meditation to Music Group.

Each Thursday Morning - 10.30 - 11.30am Adult Art Group.

All Groups are open to everyone and some make a small charge.
For contact details of organisers call Esther on 07788 766616

Look out in the 'Collingtree News' for new groups starting.

.....and coming soon

Saturday 17th October 1st Collingtree & Milton Scouts 'Tea Prepared' Fundraising event (see back page)

Saturday 21st November 7pm 'Indian Curry Night' to raise funds for the Village Room. Authentic Indian cuisine. Tickets £10 (for details call 07788 766616)

Saturday 27th November 7pm - 9pm 'Ladies Night' A repeat of the popular evening focussing on Beauty Products and demonstrations The £3 entry includes Prosecco & canapes (for details call 07788 766616)

Due to the success of the last event and the expected demand, this event will be held jointly at both the Village Room and Collingtree School.

The Village Room is available for hire at very reasonable rates: £10 per hour for Collingtree residents - £8 per hour for frequent users. For other rates contact Esther on 07788 766616 esther.stowe@btinternet.com www.hallsforhire.com

VILLAGE ASSOCIATIONS & SOCIAL GROUPS

Allotments Association

With Autumn well under way, October is usually a month of full of chilly mornings and spooky nights - the kind of weather that puts you in mind of hot mugs of tea, bowls of soup and if you are an allotment gardener, lots of lovely winter digging! Remember that the clocks go back at the end of this month so grab every minute of daylight on the allotment that you can. Don't forget that there is the AGM for members on 22nd October at 7.30pm in the Village Room.

If you are interested in seeing what vacant plots are available - call Martin 762700 or Bob 761368

Milton Malsor & Collingtree Women's Institute

The Tea Party to mark the WI Centenary was a great success - lots of chat, tea and cakes. Now we return to the programme and hold our Annual General Meeting - 7.30pm in the Milton Malsor Village Hall on Thursday 8th October. The plan is that, once the business side of things is over, the members will enjoy a celebration of their own, with pate, cheese, biscuits and wine. Of course there will be cakes! No competition, but most probably a raffle.

For further information call Ann Marsh 766060

Medicine Collection Rota

October

Weeks Commencing:

5th & 12th October

Catherine Thompson 761368

19th & 26th October

Shirley Flight 764433

*For anyone in Collingtree who has difficulty in getting to Roade or Blisworth Surgeries, help with collecting prescriptions can be a lifeline. **There is an urgent need more volunteers to maintain this rota.** If you can help occasionally with this voluntary service, please contact the Co-ordinator: Shirley Flight 764433*

SPORTS CLUBS

Pub Skittles

A great start to the season - 2 good wins followed by a nail-biting loss by 1 point at The Compass. There is a great team spirit and some good performances with Ade Flowers, Gary Ray, Oscar and Roo Smith still unbeaten.

Find out more from Tony Jones 07789 912796

Cricket Club

Since the last update Collingtree have played just three games with two games in September having to be cancelled due to the opposition not having enough players. On 30th August in very wet conditions

Collingtree played Castlethorpe. Batting in the rain Castlethorpe reached 245 for 5 off 40 overs. In the 26th over with Collingtree on 194 runs the game was abandoned due to the rain and light. Dan Harris was on 76 not out. On 20th September Collingtree played Bugbrooke away and won by 89 runs. In the last game of the season on 27th September the opposition was Spartans from Milton Keynes at home. Spartans were all out for 94 runs in the 28th over, Gary Ray taking 5 wickets for 18 off 8 overs. Collingtree reached the target in the 27th over with the loss of 7 wickets. Extras were the highest scorer with 42 and then only two batsmen Paul Harris with 18 and Kevin Hopkins with 10 got into double figures. The team now look

forward to a golf weekend away in October and the season ending presentation dinner on 20th November at Greens. If anyone would like to join the team at the dinner please contact Karen Hopkins on 07787786094 for more information.

visit our play cricket site at <http://collingtree.play-cricket.com/>

Tennis Club

Tennis is an all year round sport. Please join us for some tennis in the Autumn sunshine. We have teams playing in the Winter leagues under our floodlights. To find out more visit our website: www.collingtreetennis.co.uk

PARISH COUNCIL NEWS

PARISH CLERK: SHIRLEY WONG 01604 700691 E: collingtreeparishcouncil@gmail.com

The Parish Council wishes to place on record its thanks to the Councillors who retired at the last elections. Ruth Marris ably looked after the interests of part of Collingtree Park and also acted as the person who checked that the financial affairs of the Council were being conducted with due probity. Iain Coull was a highly valued member of the council who was also responsible for checking and signing the cheques issued. Grateful thanks to them both.

Golf Course development The Bovis appeal pre-inquiry meeting scheduled for 10am on 23rd September was attended by the Chairman and the Parish Council was informed of the outcomes which will appear in the minutes.

Playing Field matters The playing field gate must always be left locked as this prevents any traveller incursions! The fencing and larger gateway to allow easier access to the playing field by users of pushchairs or wheelchairs has now been installed and the manhole covers replaced. The water heater in the toilet open to all has been repaired, as has the ride-on mower.

Streetlights The replacement streetlight for Spinney Drive has been fitted and it is hoped that the Golf Course will soon cut back the trees obscuring the lights at the end of Lodge Avenue. Any faulty lights should be notified to the Parish Clerk or Chairman. It is possible for parishioners to report incidents or faulty street lights themselves if they so wish by using the numbers on the lamposts. The contact for most village lights is E.ON on 01604 493743. For Collingtree Park lights and those in Glebe Farm Close, the contact is Balfour Beatty on 0300 126 1000 option 4.

Trees and bushes alongside pavements Will all residents please continue to check that any trees or bushes alongside pavements are kept pruned back so that the full width of the pavement is clear and fully accessible. There are several wheelchair users in the village and obstruction of pavements is an offence.

Watering Lane Concern continues about parking on the narrow pavement up the hill in Watering Lane as this at times forces pushchair

users to have to walk in the road. This is unacceptable. A possible solution would be to ban all parking on this part of the street and another could be to provide a long parking bay with the road being made effectively single track with a one way priority system if this could meet safe highway regulations. Views from parishioners are sought.

Parish Council contact Please make any contact with the Parish Council through the Clerk (contact details above)

The next Parish Council Meeting will be held on Wednesday 11th November at 7.30 in the Village Room when it is hoped information about Ash Lane traffic calming will be available. Minutes of all meetings are placed in the Parish Council notice-boards and email versions can be gained from the Clerk. Minutes and accounts now also appear on the Just Collingtree website with thanks to Rod Sellers..

Collingtree News is produced and delivered to every household each month, at no cost to the parish.

The support of the Parish Council and the Women's Institute is gratefully acknowledged. We also appreciate the support of our regular Sponsor, Central Foods.

A special thank you to all those who deliver the Newsletter door to every household every month.

Compiler/Editor

Rod Sellers

01604 769407

Email rod.sellers@sky.com

Parish News is printed by Sharpe Media
T: 024 7645 8833 E: studio@sharpemedia.co.uk

Parish Notices

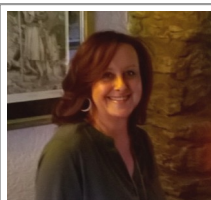
- Collingtree School held a coffee morning for Macmillan Cancer Support on Friday 25th September and raised a magnificent £429. The children baked lots of delicious treats for the event. Thank you to all who helped or attended this splendid effort.
- The 1st Collingtree & Milton Malsor Scouts will be holding a 'Tea Prepared' event in the Village Room on Saturday 17th October - from 2.30pm until 4.30pm. Afternoon tea and delicious homemade cakes will be served to raise funds for the local Scout group.

Planning Watchdog

Bovis Development Bovis has appealed to the government over the refusal by Northampton Borough Council of the plan for 1,000 houses on the greenfield site between Hunsbury and Collingtree. The public inquiry will start on 1st December at Franklin's Gardens and run for up to ten days. At a briefing meeting on 23rd September, the Planning Inspector Colin Bell outlined how the Inquiry would be run. NBC has refused permission for reasons of strategic planning, impact on local highways, closeness to the M1 and impact on Collingtree Village. The original refusal also included concerns about increased air pollution but this was withdrawn on legal advice and claims that pollutants around the M1 and A45 are now decreasing. Local Parish Councils and campaign groups like HCRA have questioned this opinion and, subject to seeing clear evidence, still intend to raise this issue at the Inquiry. The Inspector has also said that he expects to see robust evidence to counter the flood risk concerns raised by local residents. The main reason for refusal by NBC remains the escalating traffic issues on roads around the A45 - with three major warehouses in Grange Park yet to begin operating (see below)



She's back!



Just when you thought it was safe to visit your local pub - the landlady returns!

Sue Blackman will soon be back in harness at the Wooden Walls where for the last few weeks, Alan, Kirsty and Michael have been holding the fort. Sue will rejoin the team on 10th October after recuperating from a broken ankle and there are lots of new plans and ideas. Sue and the team want to know what customers really want from their local pub - so please email your comments and suggestions to: sblackman@aol.com

Coming soon: Wednesday 21st October Trafalgar Day Dinner to mark the anniversary of the Battle and the Pub's unique name. Saturday 31st October Halloween Fun - Thursday 5th November Bonfire Night

The Harvest Festival this year will be at St Columba's on Sunday 4th October at 10.30am with the Harvest Supper being on Monday 5th October at 7.30pm in the Village Room.

Tickets are £8 and available from Irene Skinner 768394 and Mick Marsh 766060
All produce and items donated will be passed to the Food Bank.

Winter Flu Injections - 7th October

Once again Nurse Geraldine Parish will visit 4 Barn Mews and provide winter flu injections for eligible patients of Roade, Blisworth & Grange Park Surgeries. The session is from 3pm until 5.30pm. No appointment is needed. Any queries call Joanna on 761759

CENTRAL FOODS



AS DISTRIBUTORS OF FROZEN FOODS TO WHOLESALERS AND CATERERS THROUGHOUT THE UK, WE MAKE LIFE EASIER FOR THOUSANDS OF FOOD SERVICE PROFESSIONALS

WE ARE DELIGHTED TO SPONSOR THE COLLINGTREE PARISH NEWSLETTER AGAIN DURING 2015

Tel: 01604 858522 Email: enquiries@centralfoods.co.uk - www.centralfoods.co.uk